

INSTRUCTIONS FOR USE - PDC head lice comb

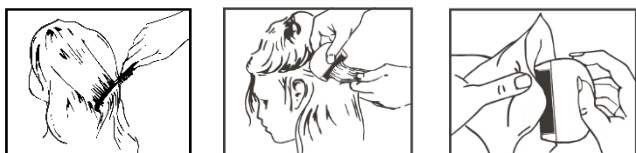
Intended purpose: The head lice comb is intended for detection and/or removal of head lice and their eggs.

Indications: The head lice comb is used for 1) treating people with a head lice infestation, 2) checking people for head lice to make a diagnosis and 3) to monitor the efficacy of a head lice treatment.

Target group: For human use only.

Intended user: Lay person, health care professionals and scientists.

1. Wet the hair and comb/brush the hair using an ordinary comb or hairbrush to get rid of any snarls or tangles in the hair.
2. Divide the hair into comb wide sections. Hair clips may help.
3. Face the head lice comb, holding the site of the CE mark on the head lice comb towards the head and parallel with the scalp so the special designed rounded ends of the teeth will slide over the scalp without scratching.
4. Comb each section of hair with the head lice comb, starting from the scalp and all the way to the end of the hair strand.
5. After each stroke wipe the head lice comb with a white tissue and examine any debris found.
6. Repeat the process until all the hair has been combed, paying special attention to the areas behind the ears and at the back of the neck.
7. You may find a magnifying glass helpful to check, if what you have found is a louse rather than just a flake of skin or dust.
8. After use, wash the head lice comb with lukewarm water and hand soap and dry before storing.



This product is a medical device and is reusable.


 Precautions:

Do not use if it is damaged or discoloured.

Do not boil.

If any serious incident has occurred in relation to the use of the head lice comb, you should report it to the distributor, the manufacturer and/or the competent local medical device authority.



 Zantey ApS • Lejrvej 17 • 3500 Værløse • Denmark • www.zantey.com

Zantey ApS_IFU PDC_Rev. 20200102_003